

# Winjet ML5000W

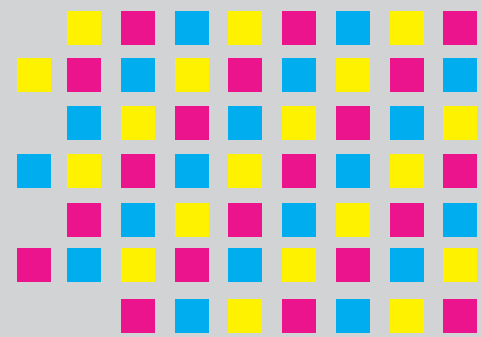
Continuous Laser Printer

**winjet**



**Print Fast**

**Communicate Efficiently**



*Your Best Partner for Printing Solutions*

<b>Main Features</b>	Color	Black (Monochrome)	<b>Dimensions</b>	Width	780 mm	
	Print Method	Electrophotography Process, LED Array		Length	890 mm (1,520 mm w/ Stacker)	
	Resolution	300 x 300 dpi / 600 x 600 dpi		Height	1,360 mm	
	Print Speed	5,000 lpm		<b>Environments</b>	Power Requirements	200~240 VAC, 50/60 Hz
	Developing Method	Dry, Two-Ingredient Developer			Temperature	Operating: 15~28°C Non-Operating: -10~35°C
	Fusion Method	Flash (Xenon Lamp) and IR Fusing System			Humidity	30~80 % RH
	Paper Feed	Continuous with Pin Feed (Auto Loading)		<b>Consumable Life</b>	Toner	20K pages
<b>Printing Area</b>	Page Length	Max. 20"	Developer		300K pages	
	Width	Max. 17"	Developer Unit		600K pages	
<b>Paper</b>	Type	Fanfold Continuous Paper	OPC Cartridge		300K pages	
	Width	6~18 "	<b>Image Performance</b>	I.D. Set	0.8~1.1 (step 0.1)	
	Page Length	7~20 " w/o Power-Stacker 7~14 " w/ Power-Stacker		Toner Mark	NULL	
	Thickness	3~11 mil		Unevenness in I.D.	1.0 ± 0.2	
	Weight	60~204 g/m <sup>2</sup>		Guarantee of Print Quality	Except ± Some Length from Perforation Line	
	Others	Label Stock etc.	<b>Controllers (optional)</b>	OS	Windows, PC Based Controller	
	Supply Capacity	3,000 pages (64 g/m <sup>2</sup> )		Video I/F Card	PCK600 (for PCI Slot)	
	Stacker Capacity	3,000 pages (64 g/m <sup>2</sup> )		Ethernet	100BASE-TX/100BASE-T, IPV6 Support 1000BASE-TX/1000BASE-T, IPV6 Support	
<b>B/W Ratio Black</b>		Max. 20 %		Interface	TCP/IP LPR, RAW, Parallel (Option)	
	Monthly PV	600K pages (A4 Landscape)		Emulation	ULPC, ESC/P, PCL5, PostScript, IPDS (Option), AFP (Option)	
<b>Reliability</b>	M/C life	5 years or 48,000,000 pages (A4 Landscape)		Code	Big-5, GB2, UTF-8	
	MTBF	2,000 hours		Symbols	OCR Font Barcode: 25 Code, 39 Code, 128 Code, UPC/EAN Code 2D Barcode: QR-Code, PDF-417	
	MTTR	1 hour		System Environment	Microsoft Windows 2000/2003/2008/XP/7/8/10(32/64 Bit), UNIX, Linux, Unisys	
	<b>Weight</b>		282 kg (327 kg with Stacker)	PS Driver & PC Driver	Windows	

Specifications shall be subject to any changes without additional notices.



## KPOWERSCIENCE CO., LTD.

8FL., NO.276, SEC.1, TA-TUNG RD., HSI-CHIH DIST., NEW TAIPEI CITY, TAIWAN  
 TEL: 886-2-2647-5855  
 FAX: 886-2-2643-1151  
 Website: [www.winjet-printers.com](http://www.winjet-printers.com)  
 E-mail: [jingyang@kpower.com.tw](mailto:jingyang@kpower.com.tw)

Copyright © Kpowerscience Co., Ltd. All rights reserved.